



مكتب شافعي . شريف

SHAFIE-SHERIF BUREAU

CONSULTANT ARCHITECTS

Prof. Dr. Ahmed Sherif



1 El-Sad El Aaly St., Dokky, Giza, Cairo, EGYPT

Tel: +(20)2-25788864 Fax: +(20)2-37629225 Mobile: +(20)10-1668111

web site: www.sh-sh-b.com

email: shafiesherif@yahoo.com



SHAFIE-SHERIF BUREAU

Consultant Architects

SHAFIE-SHERIF Bureau is an architectural consulting firm that provides hospital planning and full range of architectural services. The firm's experience is based on a heritage of more than seventy years of architectural practice in Egypt and Middle-East. Shafie-Sherif Bureau was the winner of several architectural design competitions in Egypt.

Design of hospital and healthcare facilities is the major expertise of SHAFIE-SHERIF Bureau. It is one of the very few firms in Egypt that were given the official status of "consultant in hospital design". CEO Dr. Ahmed Sherif, Head of architecture Department at the American University in Cairo, also holds strong 20 years of experience in hospital design and construction supervision. Who officially recognized as "consultants in hospital design".

SHAFIE-SHERIF Bureau has established its excellent reputation in design through its numerous healthcare projects in Egypt and the Middle-East. The team of architects of the firm possesses an extensive experience in the design and construction supervision of hospitals and public buildings. This extends to upgrade and renovation of existing facilities.

SHAFIE-SHERIF Bureau collaborates with top firms in Saudi Arabia for developing state-of-the-art healthcare facilities designs. The firm produces comprehensive designs through its collaboration with highly qualified engineering consultants in the medical equipment, electromechanical and structural engineering fields.

In addition to design of healthcare facilities, SHAFIE-SHERIF Bureau provides architectural consultant services for an array of project types. These include: educational buildings, hotels, tourist villages, exhibition and convention halls, car parking structures, industrial facilities, commercial, and residential projects.



RANGE OF SERVICES

- Project definition and programming
- Hospital and healthcare facilities planning
- Architectural and interior design
- Construction workshop drawings
- Construction Supervision



SHAFIE-SHERIF BUREAU

Ahmed H. Sherif

Executive Partner and Senior Architect

Ahmed H. Sherif is a Professor of Architecture at The American University in Cairo. He is the chairman of the department of architecture at AUC.

Dr. Sherif has more than 39 years of experience in architectural design and construction. He is a member of the national committee for the guidelines for design of hospital and healthcare facilities in Egypt. He is registered as a professional architect having a "consultant" status with specialization in healthcare facilities design and construction.

Dr. Sherif is an associate member of the American Institute of Architects, a member of the local section of the International Union of Architects, the American Society of Civil Engineers and the Egyptian Syndicate of Engineers.



Nationality: Egyptian

Sex: Male

Date of Birth: 21 December 1957

Languages: Arabic and English

Credentials

Doctor of Architecture, The University of Michigan, Ann Arbor, Michigan, USA	1988
M.Sc. in Architecture, Cairo University, Cairo, Egypt	1983
B.Sc. in Architecture (Honors.), Cairo, University, Egypt	1979

Recent Projects

Capital Med Medcial City – Phase I, 470 beds-Badr City, Egypt	On-going
Prototype Oncology Center-100 beds -Design Concept phase, Tender documents and Detailed drawings - Kingdom of Saudi Arabia	2018
Prototype Cardiology Center -100 beds -Design Concept phase, Tender documents and Detailed drawings - Kingdom of Saudi Arabia	2018
Prototype Ophthalmology Center -20 beds -Design Concept phase, Tender documents and Detailed drawings - Kingdom of Saudi Arabia	2018
Prototype Trauma Center -80 beds -Design Concept phase, Tender documents and Detailed drawings - Kingdom of Saudi Arabia	2018
Medical Tower -300 beds -Design Concept phase, Tender documents and Detailed drawings - Kingdom of Saudi Arabia	2018

Eradah Complex for Special Needs Education and Rehabilitation -Jubail, Kingdom of Saudi Arabia	2017
Prototype branch of Sultan Bin Abdulaziz city for human services- 200Beds- Preliminary Design Phase-- Riyadh, Kingdom of Saudi Arabia	2017
King Saud Medical City, Tower III Hospital- 480 Beds – Design Development Phase and Construction Documents - Riyadh, Kingdom of Saudi Arabia	2015
AI - Azhar University Specialized Hospital-Diagnostic Facilities Update Cairo, Egypt	On-going
Resala Charity Hospital for Children, Mokattam, Cairo, Egypt	2015
College of Medicine, Academic Building, Pharos University, Alexandria, Egypt	2015
Teaching/Private 500 Beds Hospital, Pharos University, Alexandria, Egypt	2015
New Andalusia Hospital, Jeddah, Saudi Arabia	2015
Yanbu General Hospital, Emergency Building, Saudi Arabia	2015
Al Oroboa 170-Bed General Hospital, Riyadh, KSA (in cooperation with Al-Moubarak Consultant Engineers)	2014
Wadi El-Neel Hospital Physiotherapy / Rehabilitation Center And Parking , Cairo, Egypt	2014
El-Gezira High Institute Continuing Education Building, El-Gezira High Institute for Technology, Cairo, Egypt	2014
Design Review of Sulaiman Al Rajhi Educational Hospital- 300 Beds Al Bukairiah - Qassim Area, Kingdom of Saudi Arabia	2014
International Hospital Of New Cairo, 70-Bed Cardiology & Orthopedic Hospital for the Egyptian/French/German group	2014
Alexandria Urology and Nephrology 60-Bed Hospital, Alexandria, Egypt	2015
Upgrade of Al Fanateer 200-bed Hospital and 2 Clinics for the Royal Commission of Jubail and Yanboa, Jubail, KSA (in cooperation with Al Naim Consultants)	2012
Al Oroboa170-Bed General Hospital, Riyadh, KSA (in cooperation with Al-Moubarak Consultant Engineers)	2012
International Hospital Of New Cairo, 70-Bed Cardiology & Orthopedic Hospital for the Egyptian/French/German group	2012
Alexandria Urology and Nephrology 60-Bed Hospital, Alexandria, Egypt	2012
New Cairo Specialized 175-Bed Hospital, New Cairo, Egypt	2010
Prototype 300-Bed Obstetrics, Gynecology and Pediatric Hospital for the Ministry of Health, KSA (in cooperation with East Consulting Engineers)	2008
Wadi El- Neel General Hospital Expansion 262- Beds, Cairo, Egypt	2008
King Faisal University Teaching Hospital, Dammam, KSA (in cooperation with Saudi Consult)	2003
New Cairo Specialized 175-Bed Hospital, New Cairo, Egypt	2011
Obstetrics, Gynecology and Pediatrics 300-Bed Prototype Hospital for the Ministry of Health, KSA (in cooperation with East Consulting Engineers)	2009
Wadi El- Neel General Hospital Expansion to 450- Beds, Cairo, Egypt	2017
Ophthalmology clinics Building for the Ministry of Health, Saudi Arabia (in collaboration with East Consulting Office)	2010
Al-lman Hospital Expansion for the Ministry of Health, Saudi Arabia (in collaboration with East Consulting Office)	2010
Emergency Building Prototype for the Ministry of Health, Saudi Arabia (in collaboration with Omrania and Associates)	2010
Blood Bank Building Prototype for the Ministry of Health, Saudi Arabia (in collaboration with Omrania and Associates)	2011



SHAFIE-SHERIF BUREAU

Ahmed Labib

Healthcare Planner and lead Designer

Ahmed Labib joined Shafie-Sherif Bureau in 1992 where he worked a variety of hospital projects.

Eng. Ahmed has more than 28 years of experience in architectural design.

Nationality: Egyptian

Sex: Male

Date of Birth: 17 September 1968

Languages: Arabic and English

Credentials

Diploma Degree in project management, AUC University	2002
B.Sc. in Architecture ,Cairo, University, Egypt	1990

Recent Projects

CapitalMed Medcial City – Phase I, 470 beds-Badr City, Egypt	Ongoing
Prototype Oncology Center-100 beds -Design Concept phase, Tender documents and Detailed drawings - Kingdom of Saudi Arabia	2018
Prototype Cardiology Center -100 beds -Design Concept phase, Tender documents and Detailed drawings - Kingdom of Saudi Arabia	2018
rototype Ophthalmology Center -20 beds -Design Concept phase, Tender documents and Detailed drawings - Kingdom of Saudi Arabia	2018
Prototype Trauma Center -80 beds -Design Concept phase, Tender documents and Detailed drawings - Kingdom of Saudi Arabia	2018

Medical Tower -300 beds -Design Concept phase, Tender documents and Detailed drawings - Kingdom of Saudi Arabia	2018
Eradah Complex for Special Needs Education and Rehabilitation -Jubail, Kingdom of Saudi Arabia	2017
Prototype branch of Sultan Bin Abdulaziz city for human services- 200Beds- Preliminary Design Phase-- Riyadh, Kingdom of Saudi Arabia	2017
King Saud Medical City, Tower III Hospital- 480 Beds – Design Development Phase and Construction Documents - Riyadh, Kingdom of Saudi Arabia	2015
AI - Azhar University Specialized Hospital-Diagnostic Facilities Update Cairo, Egypt	On-going
Resala Charity Hospital for Children, Mokattam, Cairo, Egypt	2015
College of Medicine, Academic Building, Pharos University, Alexandria, Egypt	2015
Teaching/Private 500 Beds Hospital, Pharos University, Alexandria, Egypt	2015
New Andalusia Hospital, Jeddah, Saudi Arabia	2015
Yanbu General Hospital, Emergency Building, Saudi Arabia	2015
Al Oroboa 170-Bed General Hospital, Riyadh, KSA (in cooperation with Al-Moubarak Consultant Engineers)	2014
Wadi El-Neel Hospital Physiotherapy / Rehabilitation Center And Parking , Cairo, Egypt	2014
El-Gezira High Institute Continuing Education Building, El-Gezira High Institute for Technology, Cairo, Egypt	2014
Design Review of Sulaiman Al Rajhi Educational Hospital- 300 Beds Al Bukairiah - Qassim Area, Kingdom of Saudi Arabia	2014
International Hospital Of New Cairo, 70-Bed Cardiology & Orthopedic Hospital for the Egyptian/French/German group	2014
Alexandria Urology and Nephrology 60-Bed Hospital, Alexandria, Egypt	2015
Upgrade of Al Fanateer 200-bed Hospital and 2 Clinics for the Royal Commission of Jubail and Yanboa, Jubail, KSA (in cooperation with Al Naim Consultants)	2012
Al Oroboa170-Bed General Hospital, Riyadh, KSA (in cooperation with Al-Moubarak Consultant Engineers)	2012
International Hospital Of New Cairo, 70-Bed Cardiology & Orthopedic Hospital for the Egyptian/French/German group	2012
Alexandria Urology and Nephrology 60-Bed Hospital, Alexandria, Egypt	2012
New Cairo Specialized 175-Bed Hospital, New Cairo, Egypt	2010
Prototype 300-Bed Obstetrics, Gynecology and Pediatric Hospital for the Ministry of Health, KSA (in cooperation with East Consulting Engineers)	2008
Wadi El- Neel General Hospital Expansion 262- Beds, Cairo, Egypt	2008
King Faisal University Teaching Hospital, Dammam, KSA (in cooperation with Saudi Consult)	2003
New Cairo Specialized 175-Bed Hospital, New Cairo, Egypt	2011
Obstetrics, Gynecology and Pediatrics 300-Bed Prototype Hospital for the Ministry of Health, KSA (in cooperation with East Consulting Engineers)	2009
Wadi El- Neel General Hospital Expansion to 450- Beds, Cairo, Egypt	2017
Ophthalmology clinics Building for the Ministry of Health, Saudi Arabia (in collaboration with East Consulting Office)	2010
Al-Iman Hospital Expansion for the Ministry of Health, Saudi Arabia (in collaboration with East Consulting Office)	2010
Emergency Building Prototype for the Ministry of Health, Saudi Arabia (in collaboration with Omrania and Associates)	2010
Blood Bank Building Prototype for the Ministry of Health, Saudi Arabia (in collaboration with Omrania and Associates)	2011



SHAFIE-SHERIF BUREAU

Ayman Hamza

Senior Architect and Interior Designer

Ayman Hamza is a Researcher at the Housing & Building Research Center in Cairo.

Dr. Hamza has more than 29 years of experience in architectural design and construction. He joined Shafie-Sherif Bureau in 1991 where he worked on the architectural and interior design of a variety of hospital projects.

He holds a Ph.D. in Architecture on Way-finding as an approach to hospital design. He also holds a M. Sc. Degree on the effect of human needs on designing public spaces in hospitals.

Nationality: Egyptian

Sex: Male

Date of Birth: 15 March 1967

Languages: Arabic and English

Credentials

PH.D of Architecture, Cairo University, Cairo, Egypt	2003
M.Sc. in Architecture, Cairo University, Cairo, Egypt	1997
B.Sc. in Architecture (Honors.),Cairo, University, Egypt	1989

Recent Projects

CapitalMed Medcial City – Phase I, 470 beds-Badr City, Egypt	On-going
Prototype Oncology Center-100 beds -Design Concept phase, Tender documents and Detailed drawings - Kingdom of Saudi Arabia	2018
Prototype Cardiology Center -100 beds -Design Concept phase, Tender documents and Detailed drawings - Kingdom of Saudi Arabia	2018
Prototype Ophthalmology Center -20 beds -Design Concept phase, Tender documents and Detailed drawings - Kingdom of Saudi Arabia	2018
Prototype Trauma Center -80 beds -Design Concept phase, Tender documents and Detailed drawings - Kingdom of Saudi Arabia	2018
Medical Tower -300 beds -Design Concept phase, Tender documents and Detailed drawings - Kingdom of Saudi Arabia	2018

Eradah Complex for Special Needs Education and Rehabilitation -Jubail, Kingdom of Saudi Arabia	2017
Prototype branch of Sultan Bin Abdulaziz city for human services- 200Beds- Preliminary Design Phase-- Riyadh, Kingdom of Saudi Arabia	2017
King Saud Medical City, Tower III Hospital- 480 Beds – Design Development Phase and Construction Documents - Riyadh, Kingdom of Saudi Arabia	2015
AI - Azhar University Specialized Hospital-Diagnostic Facilities Update Cairo, Egypt	On-going
Resala Charity Hospital for Children, Mokattam, Cairo, Egypt	2015
College of Medicine, Academic Building, Pharos University, Alexandria, Egypt	2015
Teaching/Private 500 Beds Hospital, Pharos University, Alexandria, Egypt	2015
New Andalusia Hospital, Jeddah, Saudi Arabia	2015
Yanbu General Hospital, Emergency Building, Saudi Arabia	2015
Al Oroboa 170-Bed General Hospital, Riyadh, KSA (in cooperation with Al-Moubarak Consultant Engineers)	2014
Wadi El-Neel Hospital Physiotherapy / Rehabilitation Center And Parking , Cairo, Egypt	2014
El-Gezira High Institute Continuing Education Building, El-Gezira High Institute for Technology, Cairo, Egypt	2014
Design Review of Sulaiman Al Rajhi Educational Hospital- 300 Beds Al Bukairiah - Qassim Area, Kingdom of Saudi Arabia	2014
International Hospital Of New Cairo, 70-Bed Cardiology & Orthopedic Hospital for the Egyptian/French/German group	2014
Alexandria Urology and Nephrology 60-Bed Hospital, Alexandria, Egypt	2015
Upgrade of Al Fanateer 200-bed Hospital and 2 Clinics for the Royal Commission of Jubail and Yanboa, Jubail, KSA (in cooperation with Al Naim Consultants)	2012
Al Oroboa170-Bed General Hospital, Riyadh, KSA (in cooperation with Al-Moubarak Consultant Engineers)	2012
International Hospital Of New Cairo, 70-Bed Cardiology & Orthopedic Hospital for the Egyptian/French/German group	2012
Alexandria Urology and Nephrology 60-Bed Hospital, Alexandria, Egypt	2012
New Cairo Specialized 175-Bed Hospital, New Cairo, Egypt	2010
Prototype 300-Bed Obstetrics, Gynecology and Pediatric Hospital for the Ministry of Health, KSA (in cooperation with East Consulting Engineers)	2008
Wadi El- Neel General Hospital Expansion 262- Beds, Cairo, Egypt	2008
King Faisal University Teaching Hospital, Dammam, KSA (in cooperation with Saudi Consult)	2003
New Cairo Specialized 175-Bed Hospital, New Cairo, Egypt	2011
Obstetrics, Gynecology and Pediatrics 300-Bed Prototype Hospital for the Ministry of Health, KSA (in cooperation with East Consulting Engineers)	2009
Wadi El- Neel General Hospital Expansion to 450- Beds, Cairo, Egypt	2017
Ophthalmology clinics Building for the Ministry of Health, Saudi Arabia (in collaboration with East Consulting Office)	2010
Al-Iman Hospital Expansion for the Ministry of Health, Saudi Arabia (in collaboration with East Consulting Office)	2010
Emergency Building Prototype for the Ministry of Health, Saudi Arabia (in collaboration with Omrania and Associates)	2010
Blood Bank Building Prototype for the Ministry of Health, Saudi Arabia (in collaboration with Omrania and Associates)	2011



SHAFIE-SHERIF BUREAU

El Shaimaa Elsayed

Healthcare Planner and Architect

El Shaimaa Elsayed joined Shafie-Sherif Bureau in 2008 where she worked a variety of hospital projects.

Eng. El Shaimaa has more than 16 years of experience in architectural design.

Nationality: Egyptian

Sex: Female

Date of Birth: 2 February 1981

Languages: Arabic and English

Credentials

Premasters, Cairo University, Egypt 2017

B.Sc. in Architecture ,Helwan, University, Egypt 2003

Recent Projects

CapitalMed Medcial City – Phase I, 470 beds-Badr City, Egypt	On-going
Prototype Oncology Center-100 beds -Design Concept phase, Tender documents and Detailed drawings - Kingdom of Saudi Arabia	2018
Prototype Cardiology Center -100 beds -Design Concept phase, Tender documents and Detailed drawings - Kingdom of Saudi Arabia	2018
Prototype Ophthalmology Center -20 beds -Design Concept phase, Tender documents and Detailed drawings - Kingdom of Saudi Arabia	2018
Prototype Trauma Center -80 beds -Design Concept phase, Tender documents and Detailed drawings - Kingdom of Saudi Arabia	2018

Medical Tower -300 beds -Design Concept phase, Tender documents and Detailed drawings - Kingdom of Saudi Arabia	2018
Eradah Complex for Special Needs Education and Rehabilitation -Jubail, Kingdom of Saudi Arabia	2017
Prototype branch of Sultan Bin Abdulaziz city for human services- 200Beds- Preliminary Design Phase-- Riyadh, Kingdom of Saudi Arabia	2017
King Saud Medical City, Tower III Hospital- 480 Beds – Design Development Phase and Construction Documents - Riyadh, Kingdom of Saudi Arabia	2015
AI - Azhar University Specialized Hospital-Diagnostic Facilities Update Cairo, Egypt	On-going
Resala Charity Hospital for Children, Mokattam, Cairo, Egypt	2015
College of Medicine, Academic Building, Pharos University, Alexandria, Egypt	2015
Teaching/Private 500 Beds Hospital, Pharos University, Alexandria, Egypt	2015
New Andalusia Hospital, Jeddah, Saudi Arabia	2015
Yanbu General Hospital, Emergency Building, Saudi Arabia	2015
Al Oroboa 170-Bed General Hospital, Riyadh, KSA (in cooperation with Al-Moubarak Consultant Engineers)	2014
Wadi El-Neel Hospital Physiotherapy / Rehabilitation Center And Parking , Cairo, Egypt	2014
El-Gezira High Institute Continuing Education Building, El-Gezira High Institute for Technology, Cairo, Egypt	2014
Design Review of Sulaiman Al Rajhi Educational Hospital- 300 Beds Al Bukairiah - Qassim Area, Kingdom of Saudi Arabia	2014
International Hospital Of New Cairo, 70-Bed Cardiology & Orthopedic Hospital for the Egyptian/French/German group	2014
Alexandria Urology and Nephrology 60-Bed Hospital, Alexandria, Egypt	2015
Upgrade of Al Fanateer 200-bed Hospital and 2 Clinics for the Royal Commission of Jubail and Yanboa, Jubail, KSA (in cooperation with Al Naim Consultants)	2012
Al Oroboa170-Bed General Hospital, Riyadh, KSA (in cooperation with Al-Moubarak Consultant Engineers)	2012
International Hospital Of New Cairo, 70-Bed Cardiology & Orthopedic Hospital for the Egyptian/French/German group	2012
Alexandria Urology and Nephrology 60-Bed Hospital, Alexandria, Egypt	2012
New Cairo Specialized 175-Bed Hospital, New Cairo, Egypt	2010
Prototype 300-Bed Obstetrics, Gynecology and Pediatric Hospital for the Ministry of Health, KSA (in cooperation with East Consulting Engineers)	2008
Wadi El- Neel General Hospital Expansion 262- Beds, Cairo, Egypt	2008
King Faisal University Teaching Hospital, Dammam, KSA (in cooperation with Saudi Consult)	2003
New Cairo Specialized 175-Bed Hospital, New Cairo, Egypt	2011
Obstetrics, Gynecology and Pediatrics 300-Bed Prototype Hospital for the Ministry of Health, KSA (in cooperation with East Consulting Engineers)	2009
Wadi El- Neel General Hospital Expansion to 450- Beds, Cairo, Egypt	2017
Ophthalmology clinics Building for the Ministry of Health, Saudi Arabia (in collaboration with East Consulting Office)	2010
Al-Iman Hospital Expansion for the Ministry of Health, Saudi Arabia (in collaboration with East Consulting Office)	2010
Emergency Building Prototype for the Ministry of Health, Saudi Arabia (in collaboration with Omrania and Associates)	2010
Blood Bank Building Prototype for the Ministry of Health, Saudi Arabia (in collaboration with Omrania and Associates)	2011



SHAFIE-SHERIF BUREAU

Mohamed Sayed

Senior Architect

Mohamed Sayed joined Shafie-Sherif Bureau in 2008 where he worked a variety of hospital projects.

Eng. Mohamed has more than 14 years of experience in architectural design.

Nationality: Egyptian

Sex: Male

Date of Birth: 27 December 1981

Languages: Arabic and English

Credentials

B.Sc. in Architecture ,Fine Arts, Helwan, University, Egypt

2005

Recent Projects

CapitalMed Medcial City – Phase I, 470 beds-Badr City, Egypt	On-going
Prototype Oncology Center-100 beds -Design Concept phase, Tender documents and Detailed drawings - Kingdom of Saudi Arabia	2018
Prototype Cardiology Center -100 beds -Design Concept phase, Tender documents and Detailed drawings - Kingdom of Saudi Arabia	2018
Prototype Ophthalmology Center -20 beds -Design Concept phase, Tender documents and Detailed drawings - Kingdom of Saudi Arabia	2018
Prototype Trauma Center -80 beds -Design Concept phase, Tender documents and Detailed drawings - Kingdom of Saudi Arabia	2018

Medical Tower -300 beds -Design Concept phase, Tender documents and Detailed drawings - Kingdom of Saudi Arabia	2018
Eradah Complex for Special Needs Education and Rehabilitation -Jubail, Kingdom of Saudi Arabia	2017
Prototype branch of Sultan Bin Abdulaziz city for human services- 200Beds- Preliminary Design Phase-- Riyadh, Kingdom of Saudi Arabia	2017
King Saud Medical City, Tower III Hospital- 480 Beds – Design Development Phase and Construction Documents - Riyadh, Kingdom of Saudi Arabia	2015
AI - Azhar University Specialized Hospital-Diagnostic Facilities Update Cairo, Egypt	On-going
Resala Charity Hospital for Children, Mokattam, Cairo, Egypt	2015
College of Medicine, Academic Building, Pharos University, Alexandria, Egypt	2015
Teaching/Private 500 Beds Hospital, Pharos University, Alexandria, Egypt	2015
New Andalusia Hospital, Jeddah, Saudi Arabia	2015
Yanbu General Hospital, Emergency Building, Saudi Arabia	2015
Al Oroboa 170-Bed General Hospital, Riyadh, KSA (in cooperation with Al-Moubarak Consultant Engineers)	2014
Wadi El-Neel Hospital Physiotherapy / Rehabilitation Center And Parking , Cairo, Egypt	2014
El-Gezira High Institute Continuing Education Building, El-Gezira High Institute for Technology, Cairo, Egypt	2014
Design Review of Sulaiman Al Rajhi Educational Hospital- 300 Beds Al Bukairiah - Qassim Area, Kingdom of Saudi Arabia	2014
International Hospital Of New Cairo, 70-Bed Cardiology & Orthopedic Hospital for the Egyptian/French/German group	2014
Alexandria Urology and Nephrology 60-Bed Hospital, Alexandria, Egypt	2015
Upgrade of Al Fanateer 200-bed Hospital and 2 Clinics for the Royal Commission of Jubail and Yanboa, Jubail, KSA (in cooperation with Al Naim Consultants)	2012
Al Oroboa170-Bed General Hospital, Riyadh, KSA (in cooperation with Al-Moubarak Consultant Engineers)	2012
International Hospital Of New Cairo, 70-Bed Cardiology & Orthopedic Hospital for the Egyptian/French/German group	2012
Alexandria Urology and Nephrology 60-Bed Hospital, Alexandria, Egypt	2012
New Cairo Specialized 175-Bed Hospital, New Cairo, Egypt	2010
Prototype 300-Bed Obstetrics, Gynecology and Pediatric Hospital for the Ministry of Health, KSA (in cooperation with East Consulting Engineers)	2008
Wadi El- Neel General Hospital Expansion 262- Beds, Cairo, Egypt	2008
King Faisal University Teaching Hospital, Dammam, KSA (in cooperation with Saudi Consult)	2003
New Cairo Specialized 175-Bed Hospital, New Cairo, Egypt	2011
Obstetrics, Gynecology and Pediatrics 300-Bed Prototype Hospital for the Ministry of Health, KSA (in cooperation with East Consulting Engineers)	2009
Wadi El- Neel General Hospital Expansion to 450- Beds, Cairo, Egypt	2017
Ophthalmology clinics Building for the Ministry of Health, Saudi Arabia (in collaboration with East Consulting Office)	2010
Al-Iman Hospital Expansion for the Ministry of Health, Saudi Arabia (in collaboration with East Consulting Office)	2010
Emergency Building Prototype for the Ministry of Health, Saudi Arabia (in collaboration with Omrania and Associates)	2010
Blood Bank Building Prototype for the Ministry of Health, Saudi Arabia (in collaboration with Omrania and Associates)	2011



SHAFIE-SHERIF BUREAU

Specialized Engineering Sub-Consultants

Structural

CDEC

Center of Design and Engineering Consulting

Center of Design & Engineering Consulting

Prof. Dr. Re Mohamed El-Zanaty & Prof. Dr. Ashraf El-Zanaty



Consulting Engineering Bureau

Dr. Sherif Aboulmaged

Hilal

Structural Design & Consultation

Prof. Drs. M. Hilal & M. Sameh Hilal



Engineering House of Expertise

Electromechanical

SHAKER
CONSULTANCY GROUP

SHAKER CONSULTANCY GROUP



Engineering House of Expertise



INTER DESIGN GROUP

Electro-mechanical Design Group



Environment and Infra structure studies

Prof. Sameh Abdel Gawad

Medical equipment



BST

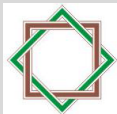
Prof. Samir Hammad



CRESCENT TECHNOLOGIES

Prof. Bassel Tawfik

Soil Investigation



EDECON

**ENGINEERING DESIGN CONSULTANTS
Consulting engineer**

Dr. Hussein H. Elmamlouk



SHAFIE-SHERIF BUREAU

Consultant Architects

LIST OF PROJECTS

Project Name	Date
CapitalMed Medcial City – Phase I, 470 beds-Badr City, Egypt	On-going
CapitalMed Medcial City – General Hospital, 350 beds-Badr City, Egypt	On-going
CapitalMed Medcial City – Rehabilitation & Wellness Center, 120 beds-Badr City, Egypt	On-going
CapitalMed Medcial City – Clinics plaza, training and education center-Badr City, Egypt	On-going
CapitalMed Medcial City – Shopping Mall -Badr City, Egypt	On-going
Prototype Oncology Center-100 beds -Design Concept phase, Tender documents and Detailed drawings - Kingdom of Saudi Arabia	2018
Prototype Cardiology Center -100 beds -Design Concept phase, Tender documents and Detailed drawings - Kingdom of Saudi Arabia	2018
Prototype Ophthalmology Center -20 beds -Design Concept phase, Tender documents and Detailed drawings - Kingdom of Saudi Arabia	2018
Prototype Trauma Center -80 beds -Design Concept phase, Tender documents and Detailed drawings - Kingdom of Saudi Arabia	2018
Medical Tower -300 beds -Design Concept phase, Tender documents and Detailed drawings - Kingdom of Saudi Arabia	2018
Eradah Complex for Special Needs Education and Rehabilitation -Jubail, Kingdom of Saudi Arabia	2017
Prototype branch of Sultan Bin Abdulaziz city for human services- 200Beds-Preliminary Design Phase-- Riyadh, Kingdom of Saudi Arabia	2015
King Saud Medical City, Tower III Hospital- 480 Beds – Design Development Phase and Construction Documents - Riyadh, Kingdom of Saudi Arabia	2015
Al - Azhar University Specialized Hospital-Diagnostic Facilities Update Cairo, Egypt	On-going
Resala Charity Hospital for Children, Mokattam, Cairo, Egypt	2015
College of Medicine, Academic Building, Pharos University, Alexandria, Egypt	2015
Teaching/Private 500 Beds Hospital, Pharos University, Alexandria, Egypt	2015
New Andalusia Hospital, Jeddah, Saudi Arabia	2015
Yanbu General Hospital, Emergency Building, Saudi Arabia	2015
Design Review of Sulaiman Al Rajhi Educational Hospital- 300 Beds Al Bukairiah - Qassim Area, Kingdom of Saudi Arabia	2014



SHAFIE-SHERIF BUREAU

Consultant Architects

LIST OF PROJECTS

Project Name	Date
Upgrade of Al Fanateer 200-bed Hospital and 2 Clinics for the Royal Commission of Jubail and Yanboia, Jubail, KSA (in cooperation with Al Naim Consultants)	2012
Al Oroboa 170-Bed General Hospital, Riyadh, KSA (in cooperation with Al-Moubarak Consultant Engineers)	2014
Wadi El-Neel Hospital Physiotherapy / Rehabilitation Center And Parking , Cairo, Egypt	2014
El-Gezira High Institute Continuing Education Building, El-Gezira High Institute for Technology, Cairo, Egypt	2014
International Hospital Of New Cairo, 70-Bed Cardiology & Orthopedic Hospital for the Egyptian/French/German group	2014
Alexandria Urology and Nephrology 60-Bed Hospital, Alexandria, Egypt	2015
New Cairo Specialized 175-Bed Hospital, New Cairo, Egypt	2011
Obstetrics, Gynecology and Pediatrics 300-Bed Prototype Hospital for the Ministry of Health, KSA (in cooperation with East Consulting Engineers)	2009
Wadi El- Neel General Hospital Expansion to 450- Beds, Cairo, Egypt	2008
King Faisal University 650-bed Teaching Hospital , Dammam, KSA (in cooperation with Saudi Consult)	2003
Ophthalmology clinics Building for the Ministry of Health, Saudi Arabia (in collaboration with East Consulting Office)	2010
Al-Iman Hospital Expansion for the Ministry of Health, Saudi Arabia (in collaboration with East Consulting Office)	2010
Emergency Building Prototype for the Ministry of Health, Saudi Arabia (in collaboration with Omrania and Associates)	2010
Blood Bank Building Prototype for the Ministry of Health, Saudi Arabia (in collaboration with Omrania and Associates)	2011
One Day Surgery Building Prototype for the Ministry of Health, Saudi Arabia (in collaboration with Omrania and Associates)	2010
Regional Laboratory Prototype for the Ministry of Health, Saudi Arabia (in collaboration with Omrania and Associates)	2009
General 300-Bed Prototype Hospital for the Ministry of Health, Saudi Arabia (in collaboration with East Consulting Office)	2010
General 500-Bed Prototype Hospital for the Ministry of Health, Saudi Arabia (in collaboration with Zuhair Fayeze Partnership)	2009



SHAFIE-SHERIF BUREAU

Consultant Architects

LIST OF PROJECTS

Project Name	Date
El Rahmah General Hospital, Ismailia Road, Egypt	2008
Organ-Transplant Surgery and ICU Unit for Theodore Bilharzias Hospital Institute, Giza, Egypt	2007
MRI Special Unit for Wadi El Neel Hospital, Cairo Egypt	2007
University of The Mediterranean Teaching Hospital, Egypt (A 400-bed teaching hospital), 6 th of October City, Egypt	2006
Resala General Hospital, Maadi, Cairo, Egypt	2006
Amoun Holding Company Office Park, Obour City, Egypt	2006
The AUC President House Complex, New Campus Development, Cairo, Egypt	2006
El-Sahel Teaching Hospital Upgrading, Cairo, Egypt	2005
Techno-Star Car Showroom Building and Service Center for Dr. Tharwat Basily, Ismailia Road, AL Obour City, Egypt	2003
El-Nakheel Specialized Hospital, Cairo, Egypt	2002
El-Kawkab El-Teby Hospital, Cairo, Egypt	2002
Dreamland Medical Center, 6th of October city, Egypt	2002
Pro. Dr. Adel Sadek Psychiatric Hospital, Heliopolis, Cairo, Egypt	2001
Cornea Bank and Specialized Eye Surgery Centre, Cairo, Egypt	2001
El-Mahaba Medical and Community Centre, Cairo, Egypt	2000
The Hearing and Speech Institute New Building, Giza, Egypt	1999
Trauma Center of El-Sahel Hospital, Cairo, Egypt	1999
Hotel Sheraton Montazah Extension, and Residential Complex, Alexandria, Egypt	1999
Day-Surgery Suite for The Hearing and Speech Institute, Giza, Egypt	1997
Upgrading Operating Theatre Suite of the National Cancer Institute, Cairo, Egypt	1997



SHAFIE-SHERIF BUREAU

Consultant Architects

LIST OF PROJECTS

Project Name	Date
Obstetrics and Gynecology Teaching Hospital, Cairo University, Cairo, Egypt	1997
Psychiatric and Addiction Treatment Teaching Hospital , Cairo University, Cairo, Egypt	1997
EL- Sahab Tourist Village, North Coast, Egypt	1997
AL Azhar University New Teaching Hospital, Nasr City (A 500-700 Bed Teaching Hospital), Cairo, Egypt	1996
Upgrade of Imbaba General Hospital, Giza, Egypt	1996
The National Institute for Psychiatric Health, Badr City, Egypt	1995
Trauma and Emergency Center Prototype for the Ministry of Health, Egypt	1995
Wadi-El-Neel Nile Club, Maadi, Cairo, Egypt	1995
Wadi-El-Neel General Hospital 120 beds , Cairo, Egypt	1994
National Cancer Institute Additions and Renovations , Cairo, Egypt	1994
Tourist Rehabilitation Resort Village, Six of October City, Egypt	1992



Name of Client:

Egyptians for
Healthcare
Services

Approx. cost:

Phase 1: 6,948
Million
EGP

Area:

Phase 1: 386,000 m²

Date:

On-going

CapitalMed Medcial City – Phase I, 470 beds

Badr City, Egypt

Project Components:

Phase I:

1. 350-bed general hospital (110,000 m²)
2. 120-bed rehabilitation and wellness center (73,000 m²)
3. Clinics plaza, training and education center (33,000 m²)
4. Shopping Mall (60,000 m²)
5. Central Administration Building (10,000 m²)
6. Underground Parking (100,000 m²)



Services:

- Collaborate with HKS in Schematic Design of Phase I hospital buildings
- Concept and Schematic Design of shopping mall.
- Tender documents of phase I buildings
- Detailed design of phase I buildings

Associated Firm:

HKS, USA



Name of Client:

Egyptians for
Healthcare
Services

Approx. cost:

Phase 1: 1,980
Million
EGP

Area:

Phase 1: 110,000 m2

Date:

On-going

CapitalMed Medcial City – General Hospital, 350 beds

Badr City, Egypt

Project Components:

- Inpatient Nursing Units
- Critical Care Unit
- Neonatal intensive care unit/special
- LDR/C-section
- Burn unit & Burn care clinic
- Main Surgical Suite
- Diagnostic Imaging
- Endoscopy
- Emergency Department
- Cath-EP Suit
- Non-invasive cardiology
- Neurodiagnostics
- Clinical Laboratory
- Blood Bank
- Anatomic pathology (histology/cytology)
- Respiratory therapy
- Rehab services-Inpatient Satellite Gym
- Dialysis Inpatient
- Administrative and Public Services
- Logistics and support Services



Services:

- Collaborate with HKS in Schematic Design of Phase I hospital buildings
- Concept and Schematic Design of shopping mall.
- Tender documents of phase I buildings
- Detailed design of phase I buildings

Associated Firm:

HKS, USA





Name of Client:

Egyptians for
Healthcare
Services

Approx. cost:

Phase 1: 1,314
Million
EGP

Area:

Phase 1: 73,000 m2

Date:

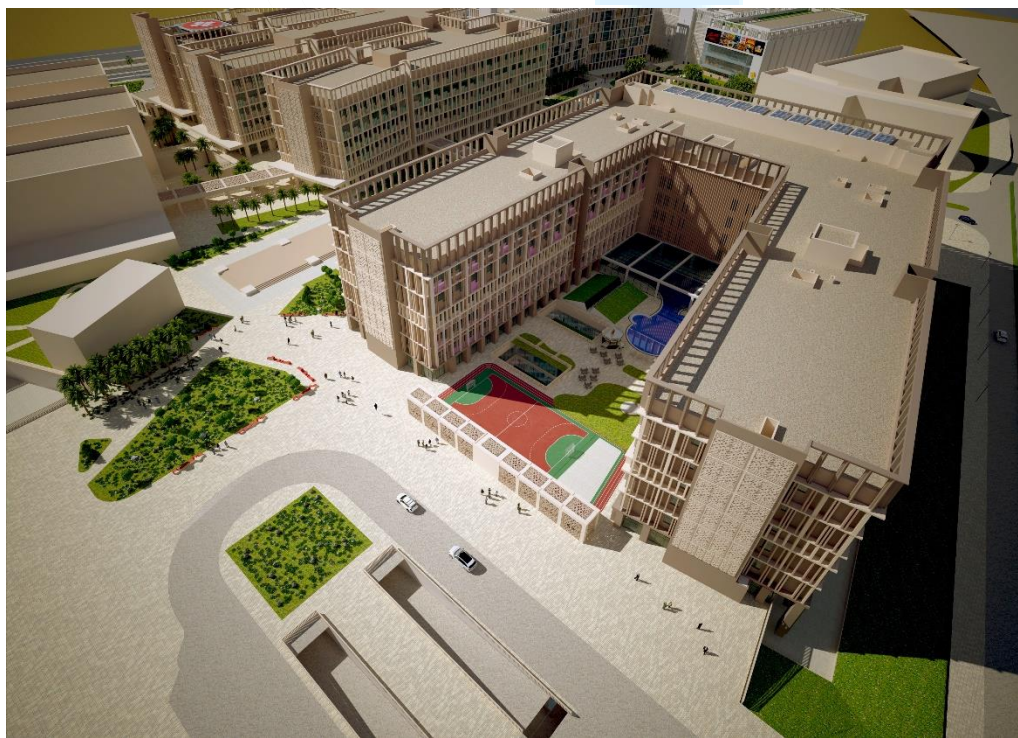
On-going

CapitalMed Medcial City – Rehabilitaion & wellness Center, 120 beds

Badr City, Egypt

Project Components:

- Inpatient Nursing Units (5units)
- Stat laboratory
- Obstacle ability lab
- Rehab Hydrotherapy center
- Wellness Hydrotherapy center
- Social center
- Outpatient services
- Administrative and public services
- Logistics and support services



Services:

- Collaborate with HKS in Schematic Design of Phase I hospital buildings
- Concept and Schematic Design of shopping mall.
- Tender documents of phase I buildings
- Detailed design of phase I buildings

Associated Firm:

HKS, USA





Name of Client:

Egyptians for
Healthcare
Services

Approx. cost:

Phase 1: 594 Million
EGP

Area:

Phase 1: 33,000 m2

Date:

On-going

CapitalMed Medcial City –Clinics plaza, training and education center

Badr City, Egypt

Project Components:

- Primary care-adult
- Primary care-pediatric
- Behavioral/Social health
- Cardiology-Pulmonary
- ENT
- Dental
- Dialysis –Outpatient
- Multispecialty
- OB/GYN
- Ophthalmology/Optomety
- Surgical
- Doctor's Plaza lab
- Administrative & Support Services
- Logistics and support services



Services:

- Collaborate with HKS in Schematic Design of Phase I hospital buildings
- Concept and Schematic Design of shopping mall.
- Tender documents of phase I buildings
- Detailed design of phase I buildings

Associated Firm:

HKS, USA



CapitalMed Medcial City – Shopping Mall

Badr City, Egypt

Name of Client:

Egyptians for Healthcare Services

Approx. cost:

Phase 1: 1,080 Million EGP

Area:

Phase 1: 60,000 m2

Date:

On-going

Project Components:

- Retail Spaces
- Entertainment Facilities
- Food Services
- Educational Facilities
- Roof Garden
- Services



Services:

- Collaborate with HKS in Schematic Design of Phase I hospital buildings
- Concept and Schematic Design of shopping mall.
- Tender documents of phase I buildings
- Detailed design of phase I buildings

Associated Firm:

HKS, USA





Name of Client:
Kingdom of Saudi
Arabia Ministry of
Health (MOH)

Approx. cost:
175 Million SAR

Area:
35000 m2

Date:
2018

Prototype Oncology Center -100 beds

Kingdom of Saudi Arabia

Project Components:

- Inpatient Nursing Units (5units)
- Critical Care Unit (10 Beds)
- Main Surgical Suite (4 Operating room)
- Diagnostic Imaging: RAD, US, CT, MR
- Diagnostic Imaging: Nuclear Medicine
- Radiation Oncology
- Infusion Therapy
- Chemo Mixing
- Inpatient Physiotherapy - Satellite
- Respiratory Therapy / Pulmonary
- Outpatient Clinics(14 exam)
- Outpatient Lab + Phlebotomy
- Lab: Frozen Section/ Pathology
- Outpatient Pharmacy
- Inpatient Pharmacy



Services :

- Design Concept.
- Tender documents
- Detailed drawings

Associated Firm:

-Edge/Ahmed
Abdulaziz Zaidan
Consultants
Architects
-Shaker Consultancy
Group



Name of Client:
Kingdom of Saudi
Arabia Ministry of
Health (MOH)

Approx. cost:
175 Million SAR

Area:
35000 m2

Date:
2018

Prototype Cardiology Center -100 beds

Kingdom of Saudi Arabia

Project Components:

- Inpatient Nursing Units (3units)
- Cardiovascular ICU incl. Cardiac Ped (20 Beds)
- Coronary Care Unit (20 beds)
- Main Surgical Suite (4 Operating room)
- Diagnostic Imaging: RAD, US, CT, MR
- Diagnostic Imaging: Nuclear Medicine
- Cardiac Rehab
- Inpatient Physiotherapy – Satellite
- Respiratory Therapy / Pulmonary
- Outpatient Clinics(14 exam)
- Outpatient Lab + Phlebotomy
- Lab: Frozen Section/ Pathology
- Outpatient Pharmacy
- Inpatient Pharmacy



Services :

- Design Concept.
- Tender documents
- Detailed drawings

Associated Firm:

-Edge/Ahmed
Abdulaziz Zaidan
Consultants
Architects
-Shaker Consultancy
Group



Name of Client:
Kingdom of Saudi
Arabia Ministry of
Health (MOH)

Approx. cost:
80 Million SAR

Area:
16000 m2

Date:
2018

Prototype Ophthalmology Center -20 beds

Kingdom of Saudi Arabia

Project Components:

- Inpatient Nursing Units (20 beds)
- Main Surgical Suite (4 Operating room)
- Inpatient Physiotherapy – Satellite
- Outpatient Clinics (32 exam)
- Outpatient Lab + Phlebotomy
- Lab: Frozen Section/ Pathology
- Satellite Eye Bank
- Research
- Outpatient Pharmacy
- Inpatient Pharmacy



Services :

- Design Concept.
- Tender documents
- Detailed drawings

Associated Firm:

-Edge/Ahmed
Abdulaziz Zaidan
Consultants
Architects
-Shaker Consultancy
Group



Name of Client:
Kingdom of Saudi
Arabia Ministry of
Health (MOH)

Approx. cost:
175 Million SAR

Area:
35000 m2

Date:
2018

Prototype Trauma Center -80 beds

Kingdom of Saudi Arabia

Project Components:

- Inpatient Nursing Units (3units)
- Trauma CCU (Surgical and Neuro ICU) (20 beds)
- Burn CCU (10 beds)
- Main Surgical Suite (4 Operating room)
- Diagnostic Imaging
- Emergency Department – Adult (44 beds)
- Emergency Department – Pediatric (20 beds)
- Emergency Department - Transportation
- Rehab: Physical/ Occupational Therapy
- Rehab: Audiology ENT
- Inpatient Physiotherapy – Satellite
- Neurodiagnostics
- Wound Care - Hyperbaric
- Respiratory Therapy / Pulmonary
- Outpatient Clinics(12 exam)
- Outpatient Lab + Phlebotomy
- Lab: Frozen Section/ Pathology
- Outpatient Pharmacy
- Inpatient Pharmacy



Services :

- Design Concept.
- Tender documents
- Detailed drawings

Associated Firm:

-Edge/Ahmed
Abdulaziz Zaidan
Consultants
Architects
-Shaker Consultancy
Group



Name of Client:
Kingdom of Saudi
Arabia Ministry of
Health (MOH)

Approx. cost:
600 Million SAR

Area:
121000 m2

Date:
On-going

Medical Tower -300 beds

Jeddah ,Kingdom of Saudi Arabia

Project Components:

- Inpatient Nursing Units (12units)
- Critical Care Unit (80 beds)
- Main Surgical Suite (16 Operating room)
- Diagnostic Imaging: RAD, US, CT, MR
- Diagnostic Imaging: Nuclear Medicine Radiation
- 4 Inpatient Physiotherapy – Satellite
- 4 Respiratory Therapy / Pulmonary
- Outpatient Clinics(72 exam)
- 4 Outpatient Lab + Phlebotomy
- 4 Lab: Frozen Section/ Pathology
- Outpatient Pharmacy
- Inpatient Pharmacy
- Main Kitchen
- Staff Facilities
- Visitors Restaurants



Services :

- Design Concept.
- Tender documents
- Detailed drawings

Associated Firm:

-Edge/Ahmed
Abdulaziz Zaidan
Consultants
Architects
-Shaker Consultancy
Group



Name of Client:
Charitable Society
for Special Needs in
Jubail Industrial city

Approx. cost:
100 Million SAR

Area:
20000 m2

Date:
2017

Eradah Complex for Special Needs Education and Rehabilitation

Jubail, Kingdom of Saudi Arabia

Project Components:

- Special Education and Rehabilitation Center
- Vocational Training Center
- Hyperbaric Therapy Unit
- Early Intervention Center
- Diagnostic and Assistive Training / Rehabilitation Center
- Kindergarten and Nursery
- Social Rehabilitation Center



Services :

- Design Concept.
- Schematic design

Associated Firm:

-AbdulRahman Al-Naim Consultant
Eng.
-Dr. Magda Mostafa



Name of Client:

Sultan Bin Abdulaziz
City for human
services

Approx. cost:

852 Million SAR

Area:

120000 m2

Date:

2017

Prototype branch of Sultan Bin Abdulaziz city for human services -200 beds

Riyadh, Kingdom of Saudi Arabia

Project Components:

- Rehabilitation Nursing Units (8units)
- Rehabilitation Therapy Areas For Nursing Units (8 units)
- Rehabilitation Therapy Areas For Outpatient (adult)
- Rehabilitation Therapy Areas For Outpatient (pediatric)
- Critical Care Unit (5 Beds)
- Main Surgical Suite (4 Operating rooms)
- Wound Management (19 rooms)
- Surgical Clinics (12 clinics)
- Internal medicine &Gicardiology& Pulmonology& Neuro& Audiology clinics (10 clinics)
- Dental Unit (8 clinics)
- Ophthalmology Clinic (9 Clinics)
- Psychological Services Unit (9clinics)
- Emergency Department (20 rooms)
- Imaging Suite (6 units)
- Laboratory Suite and Blood Bank Storage (Clinical Lab)
- Conference Hall (500 seats)
- Recreational Areas
- Residential Area
- General Services



Services :

- Space program.
- Design Concept.
- Preliminary design

Associated Firm:

Saud Consult
Partnership



Name of Client:

Al-Oroboa Co.
for healthcare
services

Approx. cost:
100 Million SAR

Area:
20000 m2

Date:
On-going

Al-Oroboa 170-Bed General Hospital

Riyadh, Kingdom of Saudi Arabia

Project Components:

- Nursing Units (150 beds)
- Newborn Nursery Unit (12 bassinets)
- Critical Care Unit (10 Beds)
- Newborn Critical Care Unit (12 infant)
- Main Surgical Suite (6 Operating rooms)
- Cesarean / Delivery Suite (5LDR + 1CER.)
- Endoscopy Suite (2 endoscopy rooms)
- Emergency Department (8exam+1resc.)
- Imaging Suite (9 units)
- Laboratory Suite (5 lab units)
- Outpatient Clinics Department (26 exam)
- One-Day/Outpatient Surgery Suite (14 Bed)

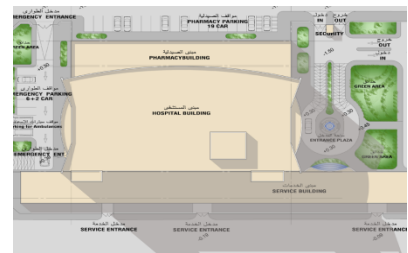


Services :

- Space program.
- Hospital planning.
- Pre-schematic design
- Schematic design.
- Architectural design development
- Final architectural Design

Associated Firm:

Al-Moubarak
Consulting
Engineers





Name of Client:

Al-Azhar University,
Cairo, Egypt

Approx. cost:

190 Million EGP

Area:

27800 m2

Date:

2016

Al - Azhar University Specialized Hospital-Diagnostic Facilities Update

Cairo, Egypt

Project Components:

- Intensive Care Unit(12 Beds)
- Coronary Care Unit (14 Beds)
- Organ Transplant Intensive Care Unit (7 Beds)
- Main Surgical Suite (15 Operating rooms)
- Organ Transplant Surgical suite(2 Operating rooms)
- Cardiac Catheterization lab (2 rooms)
- Delivery Suite (7Ldr+ 3Ces.)
- Endoscopy Suite (4 endoscopy rooms)
- Diagnostic Imaging Department (16 units)
- Nuclear medicine unit (2 Gamma)
- Chemotherapy Department (15 Beds)
- Diagnostic Laboratories (19 lab units)
- General Services



Services :

- Space program.
- Pre-schematic
- Schematic design.
- Design development
- Final design
- Construction supervision

Associated Firm:





Name of Client:

Pharos
University,
Alexandria,
Egvpt

Approx. cost:
200Million EGP

Area:
25500 m2

Date:
On-going

College of Medicine, Academic Building, Pharos University

Alexandria, Egypt

Project Components:

- Lecture Halls and Classrooms
- Laboratories
- Autopsy Halls and Museums
- Library
- Administration
- Technical Plant Facilities



Services :

- Space program.
- Pre-schematic
- Schematic design.
- Design development

Associated Firm:



Name of Client:

Pharos
University,
Alexandria,
Eqvpt

Approx. cost:
700Million EGP

Area:
90000 m2

Date:
On-going

Teaching/Private 500 Beds Hospital, Pharos University

Alexandria, Egypt

Project Components:

- Nursing Units (430beds)
- Critical Care Unit (77Beds)
- Neonatal Intensive Care Unit (6 beds)
- Surgical Suite (8 rooms)
- Cesarean/Delivery Suite (4 rooms)
- Diagnostic Imaging Department (6 rooms)
- Emergency Department
- Renal Dialysis Unit (8 beds)
- Assisted Reproductive Technology Unit (ART)
- Laboratory Suite and Blood Bank (4 units)
- Physiotherapy Unit
- Outpatient Clinics Department (9rooms)
- Outpatient Clinics Department – Teaching (10 rooms)
- Teaching Facilities
- Support services
- Parking



Services :

- Space program.
- Pre-schematic
- Schematic design.
- Design development

Associated Firm:



Name of Client:
Resala Charity
Organization

Approx. cost:
30 Million EGP

Area:
5710 m2

Date:
2015

Resala Charity Hospital for Children

Mokattam, Cairo, Egypt

Project Components:

- Children Nursing Units (24 beds)
- General and Maternity Nursing Unit (18 beds)
- Neonatal Intensive Care Unit (29 infant)
- Critical Care Unit (6 Beds)
- Surgical /Delivery Suite (2 Operating rooms+1 Delivery)
- Emergency Department
- Imaging Suite (4 units)
- Laboratory Suite (3 lab units)
- Outpatient Clinics Department (13clinic)
- General Services
- Administration



Services :

- Space program.
- Hospital planning.
- Pre-schematic design
- Schematic design.
- Architectural design development
- Final architectural Design

Associated Firm:





Name of Client:

Andalusia
Medical
Services

Approx. cost:

15 Million \$

Area:

15371 m2

Date:

On-going

New Andalusia Hospital, 131 Beds

Jeddah, Saudi Arabia

Project Components:

- Nursing Facilities (57 beds)
- Critical Care Unit (21 beds)
- Surgical Suite (7 Operating rooms)
- Emergency Department (12 beds)
- Diagnostic Imaging Department (5 rooms)
- Laboratory Suite and Blood Bank Storage
- Gastrointestinal Endoscopy Department (2 rooms)
- ESWL Unit
- Renal Dialysis Unit (5 beds)
- Physiotherapy Department
- Outpatient Clinics Department (25 clinics)
- Outpatient Pharmacy
- General and Administrative Support Services
- Medical Support Services
- Hospitality Support Services
- Parking



Services :

- Space program.
- Hospital planning.
- Pre-schematic design
- Schematic design.
- Technical Support for approval of design

Associated Firm:



Name of Client:

The Ministry of Health, KSA

Approx. cost:

9 Million \$

Area:

9000 m2

Date:

On-going

Emergency Building, Yanbu General Hospital *Saudi Arabia*

Project Components:

- Emergency Department
- Diagnostic Imaging Unit of the Emergency Department(3 rooms)
- Surgical Suite (2 Operating rooms)
- Critical Care Unit (26 beds)
- Neonatal Intensive Care Unit (6 beds)
- Training Center
- Technical Plant Facilities



Services :

- Space program.
- Pre-schematic design
- Schematic design.
- Review of Construction Drawings made by Dr. Ahmed Farid Architectural Consultants

Associated Firm:

Dr. Ahmed Farid Architectural Consultants





Name of Client:

Sulaiman Al
Rajhi Colleges

Approx. cost:

70 Million \$

Area:

70000 m2

Date:

2014

Design Review of Sulaiman Al Rajhi Educational Hospital- 300 Beds

Al Bukairiah - Qassim Area, Kingdom of Saudi Arabia

Project Components:

- Nursing Units (237 beds)
- Neonatal Nursing Unit (10 beds)
- Paediatric Nursing Unit (15 beds)
- Critical Care Unit (16 Beds)
- Coronary Care Unit (6 Beds)
- Main Surgical Suite (10 Operating rooms)
- One-Day Procedure Suite
- Imaging Suite
- Emergency Department
- Outpatient Department
- Women Health Outpatient
- Paediatric Outpatient
- Allied Health Professionals
- Renal dialysis
- Laboratory Suite
- General Services



Services :

- Review of Design made by Saud Consult

Associated Firm:

AL FAYAD
Consultants-
Engineering





Name of Client:

The Ministry of Health, KSA

Approx. cost:

126 Million \$

Area:

126000 m2

Date:

2015

King Saud Medical City, Tower III Hospital- 480 Beds- D.D. Phase and Construction Documents -*Riyadh, Kingdom of Saudi Arabia*

Project Components:

- Nursing Units (240 beds)
- Critical Care Unit (24 Beds)
- Burns Critical Care Unit (24 Beds)
- Main Surgical Suite (23 Operating rooms)
- Endoscopy Suite (3 endoscopy rooms)
- Emergency Department
- Imaging Suite (16 units)
- Nuclear medicine unit (2 Spect-1Pet-Ct)
- Cardiac Catheterization lab (4 rooms)
- Hyperbaric Unit
- Laboratory Suite (6 lab units)
- Respiratory Therapy
- AV skills
- Administrative Facilities
- General Services



Services :

- Architectural design development
- Tender documents
- Construction drawings

Associated Firm:

-Shaker Consultancy Group

-Schematic Design was made by HDR





Name of Client:

LamsetAmal
Charity
Organization

Approx. cost:

50 Million EGP

Area:

6880 m2

Date:

2015

Heart of Egypt General Hospital

Giza, Egypt

Project Components:

- Nursing Units (39 beds)
- General Critical Care Unit (8 Beds)
- Post Operative Critical care unit (4beds)
- Newborn Critical Care Unit (8beds)
- Surgical Suite (4 Operating rooms)
- Cesarean / Delivery Suite (2LDR + 1CER.)
- Emergency Department
- Imaging Suite (4 units)
- Outpatient Clinics Department(7Clinics)
- Non-Invasive Cardiac Testing Unit



Services :

- Space program.
- Hospital planning.
- Pre-schematic design
- Schematic design
- Final Design

Associated Firm:



Name of Client:

The Royal Commission of Jubail /Yanbo

Approx. cost:

100 Million SAR

Area:

24000 m2

Date:

2012

Upgrade of Al Fanateer 200-bed Hospital

Jubail, Kingdom of Saudi Arabia

Project Components:

- Nursing Units (144 beds)
- Critical Care Unit (10 Beds)
- Newborn Critical Care Unit (17infant)
- Coronary Care Unit (8 Beds)
- Pediatric C.C.U (4 Beds)
- Burns Critical Care unit (4 Beds)
- Main Surgical Suite (5 Operating rooms)
- Cesarean / Delivery Suite (4LDR + 2CER.)
- Emergency Department (2exam+4resc.+6obs.)
- Imaging Suite (10 units)
- Gamma Camera Suite
- Dialysis Dept.
- Day Care Surgery (4OR.Room)



Services :

- Space program.
- Hospital planning.
- Review of existing design.
- Pre-schematic design
- Schematic design.
- Review of design development and final design.

Associated Firm:

AbdulRahmanAl-Naim
Consultant
Engineers- ACE





Name of Client:

Prof. Dr. Seif Al
Islam and
Associates

Approx. cost:

50 Million EGP

Area:

11000 m2

Date:

On-going

Alexandria Urology and Nephrology 60-Bed Hospital

Alexandria, Egypt

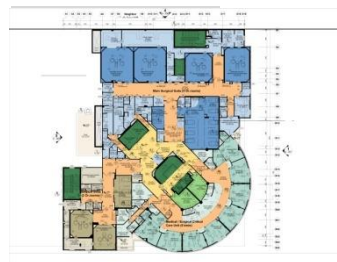
Project Components:

- Nursing Units (60 beds)
- Critical Care Unit (8 Beds)
- Main Surgical Suite
- Endoscopy Suite
- Emergency Department
- Imaging Suite
- Laboratory Suite
- Outpatient Clinics Department
- General Services
- Administrative Facilities
- Dialysis Dept.
- Extracorporeal Shock Wave Lithotripsy Unit



Services :

- Space program.
- Hospital planning.
- Pre-schematic design
- Schematic design
- Final Design
- Construction supervision





Name of Client:
MisrSaini Co.

Approx. cost:
100 Million EGP

Area:
21000 m2

Date:
On-going

International Hospital Of New Cairo, 70-Bed Card. & Orth. Hospital

New Cairo, Egypt

Project Components:

- Nursing Units (70 beds)
- Critical Care Unit (14 Beds)
- Main Surgical Suite (8 Operating rooms)
- Emergency Department
- Imaging Suite (9 units)
- Cardiac catheter unit. (2 rooms)
- Day Care Surgery
- Laboratory Suite (5 lab units)
- Outpatient Clinics Department
- Wellness Center
- Physiotherapy Dept.
- General Services
- Administrative Facilities



Services :

- Space program.
- Hospital planning.
- Pre-schematic design
- Schematic design.
- Design development
- Final design
- Construction supervision

Associated Firm:





Name of Client:
El-Gezira Higher
Institute of
Technology

Approx. cost:

Area:
2000 m²

Date:
On-going

El-Gezira High Institute Continuing Education Building

Cairo, Egypt

Project Components:

- Class rooms (1051 Students)
- Seminar room (3 rooms)
- Administrative Facilities



Services :

- planning.
- Pre-schematic design
- Schematic design.
- Design development
- Final architectural design





Name of Client:

The Eye Consultants

Approx. cost:

26 Million SAR

Area:

6900 m2

Date:

2010

Ophthalmology Clinics Building

Riyadh, Kingdom of Saudi Arabia

Project Components:

- Optometry department
- Imaging Suite
- Laser and ancillary tests department
- Outpatient Clinics Department
- VIP Clinics Department
- One-Day/Outpatient Surgery Suite
- Screening rooms



Services :

- Space program.
- Hospital planning.
- Pre-schematic design
- Schematic design.

Associated Firm:

East Consulting Engineers





Name of Client:

The Ministry of Health, KSA

Approx. cost:

57 Million SAR

Area:

40000 m2

Date:

2010

Al-Iman Hospital Expansion, 350-Beds

Riyadh, Kingdom of Saudi Arabia

Project Components:

- Nursing Units (256 beds)
- Critical Care Unit (32 Beds)
- Coronary Care Unit
- Pediatric Critical Care Unit
- Newborn Critical Care Unit (16 infant)
- Main Surgical Suite (6 Operating rooms)
- Emergency Department (12exm/tr+24obs+5 reesc+1 OR)
- Imaging Suite (14 units)
- Respiratory Therapy Unit (6 exam & treatment rooms)



Services :

- Space program.
- Hospital planning.
- Pre-schematic design
- Schematic design
- Architectural design development

Associated Firm:

East Consulting Engineers





Name of Client:

The Ministry of Health, KSA

Approx. cost:

Area:

11000m²

Date:

2010

Emergency Building Prototype

Kingdom of Saudi Arabia

Project Components:

- Triage
- Examination
- Resuscitation
- Observation
- Radiology
- Support facilities



Services :

- Space program.
- Hospital planning.
- Pre-schematic design
- Schematic design.

Associated Firm:

Omrana and Associates



Name of Client:
The Ministry of
Health, KSA

Approx. cost:

Area:
1300 m2

Date:
2010

Blood Bank Building Prototype

Kingdom of Saudi Arabia

Project Components:

- Blood donation
- Blood testing
- Blood separation
- Blood storage
- Administration



Services :

- Space program.
- Hospital planning.
- Pre-schematic design
- Schematic design.

Associated Firm:

Omrania and Associates



Name of Client:

The Ministry of Health, KSA

Approx. cost:

Area:

1200 m2

Date:

2010

One Day Surgery Building Prototype

Kingdom of Saudi Arabia

Project Components:

- Patient reception
- Patient preparation and recovery
- Support services



Services :

- Space program.
- Hospital planning.
- Pre-schematic design.
- Schematic design.

Associated Firm:

Omrania and Associates





Name of Client:

The Ministry of Health, KSA

Approx. cost:

100 Million SAR

Area:

10000 m2

Date:

2010

Regional Laboratory Building Prototype

Kingdom of Saudi Arabia

Project Components:

- Blood Bank
- Histology & Histopathology
- Biochemistry
- Bacteriology
- Micro Biology
- Virology
- Public Health
- Immunity
- Hematology



Services :

- Space program.
- Hospital planning.
- Pre-schematic design
- Schematic design.
- Architectural design development

Associated Firm:

Omrnia and Associates





Name of Client:

The Ministry of Health, KSA

Approx. cost:

400 Million SAR

Area:

65000 m2

Date:

2010

General 300-Bed Prototype Hospital

Kingdom of Saudi Arabia

Project Components:

- Nursing Units (276 beds)
- Newborn Nursery Unit (12 bassinets)
- Critical Care Unit (24 Beds)
- Newborn Critical Care Unit (16 infant)
- Coronary Care Unit (8 Beds)
- Pediatric Critical Care Units (8 Beds)
- Main Surgical Suite (6 Operating rooms)
- Cesarean / Delivery Suite (+1LDR+2OR+6LBDR.)
- Endoscopy Suite (2 endoscopy rooms)
- Emergency Department (6exm/tr+16obs+5 reesc+2 OR)
- Imaging Suite (13 units)
- Laboratory Suite (10 lab units)
- Outpatient Clinics Department (41 exam & treatment rooms)
- One-Day/Outpatient Surgery Suite (4 Operating rooms)
- Respiratory Therapy Unit (8 exam & treatment rooms)
- Nuclear Medicine Department (1 Gamma + 1 PET + 1 DEXA)



Services :

- Space program.
- Hospital planning.
- Pre-schematic design
- Schematic design.
- Architectural design development

Associated Firm:

East Consulting Engineers





Name of Client:

Dr. Ahmed
Abdel Kader
Fahmy

Approx. cost:

35 Million EGP

Area:

28000 m2

Date:

2010

New Cairo Specialized 175-Bed Hospital

New Cairo, Egypt

Project Components:

- Critical Care Unit (25 Beds)
- Newborn Critical Care Unit
- Main Surgical Suite (6 Operating rooms)
- Cesarean / Delivery Suite (2 rooms)
- Emergency Department
- Imaging Suite (7 units)
- Laboratory Suite
- Outpatient Clinics Department
- One-Day/Outpatient Surgery Suite
- Physiotherapy Dept
- Administrative Facilities
- General Services



Services :

- Space program.
- Hospital planning.
- Pre-schematic design
- Schematic design.
- Design development
- Final Design

Associated Firm:



Name of Client:

The Ministry of Health, KSA

Approx. cost:

400 Million SAR

Area:

58000 m²

Date:

2009

Obstetrics, Gynecology and Pediatrics 300-Bed Prototype Hospital

Kingdom of Saudi Arabia

Project Components:

- Nursing Units (270 beds)
- Obstetrics and Gynecology Critical Care Unit (12 Beds)
- Newborn Critical Care Unit (50 infant)
- Pediatric Critical Care Unit (24 Bed)
- Main Surgical Suite (6 Operating rooms)
- Cesarean / Delivery Suite (LDR+ 1 Delivery + 2 OR)
- Endoscopy Suite (4 endoscopy rooms)
- Emergency Department (10Exm+10Resc+ 1delivery)
- Imaging Suite (12 units)
- Laboratory Suite (5 lab units)
- Respiratory Care Unit(3 Exam/Treatment Rooms)
- Rehabilitation Therapy Department (4 Specialties)
- Assisted Reproductive Technology Unit (4Lab+1 OR)
- Outpatient Clinics Department (41 exam)
- One-Day/Outpatient Surgery Suite



Services :

- Space program.
- Hospital planning.
- Pre-schematic design
- Schematic design.
- Architectural design development

Associated Firm:

East Consulting Engineers





Name of Client:

The Ministry of Health, KSA

Approx. cost:

550 Million SAR

Area:

117000 m²

Date:

2009

General 500-Bed Prototype Hospital

Kingdom of Saudi Arabia

Project Components:

- Nursing Units (392 beds)
- Newborn Nursery Unit (44 bassinets)& Critical Care Unit (30 infant)
- Critical Care Unit (34 Beds)& Coronary Care Unit (14 Beds)
- Pediatric Critical Care Units (14 Beds)
- Burns Critical Care Unit (14 beds)
- Main Surgical Suite (10 Operating rooms)
- Cesarean / Delivery Suite (2delivery+8LDR+2OR+6LBDR.)
- Cardiac Surgical Suite(2 Operating rooms)
- Cardiac Catheterization Lab (2 Cath labs)
- Endoscopy Suite (4 endoscopy rooms)
- Emergency Department (8 trg+20 exm/tr+30obs+5 reesc+2OR)
- Imaging Suite (17 units)
- Nuclear Medicine Department (1 Gamma + 1 PET + 1 DEXA)
- Laboratory Suite (14 lab units)&Blood Bank Department (3 lab units)
- Respiratory Therapy Unit (3 exam & treatment rooms)
- Rehabilitation Therapy Department (4 specialties)
- Outpatient Clinics Department &One Day/Outpatient Surgery Suite



Services :

- Space program.
- Hospital planning.
- Pre-schematic design
- Schematic design.
- Architectural design development

Associated Firm:

Zuhair Fayeze Partnership



Name of Client:

King Faisal
University, KSA

Approx. cost:

565 Million SAR

Area:

Date:

2006

King Faisal University 650-bed Teaching Hospital

Dammam, Kingdom of Saudi Arabia

Project Components:

- Nursing Units (650 beds)
- Critical Care Unit (45 Beds)&Neo-Natal Intensive care unit (25 Cots)
- Burns Unit (10 beds)
- Bone Marrow Unit (5 beds)
- Main Surgical Suite (10 Operating rooms)& One-Day Surgery Suite
- Cesarean / Delivery Suite (6 rooms)& In-Vitro-Fertilization Unit
- Cardiac Catheter Unit (1 room)
- Emergency Department &Emergency Dept surgical unit (3 rooms)
- Endoscopy Suite (3 endoscopy rooms)
- Imaging Suite (24 units)& Nuclear Medicine dept.
- Radiotherapy and Bracky therapy (3 rooms)&Chemotherapy dept
- Laboratory Suite & blood bank
- Neuro-diagnostic Lab
- Physiotherapy Dept& Respiratory therapy Unit
- Renal Dialysis dept
- Primary Care Dept, Outpatient Clinics Department
- Teaching Facilities & Medical Library



Services :

- Space program.
- Hospital planning.
- Pre-schematic design
- Schematic design.
- Architectural design development

**Associated
Firm:**

Saudi Consult



Name of Client:

National
Defense
Council, Egypt

Approx. cost:

1000 Million EGP

Area:

80000m²

Date:

On-going

Wadi El- Neel General Hospital Expansion to 450- Beds

Cairo, Egypt

Project Components:

- Nursing Units (225 beds)
- General Intensive care unit (18 beds)
- Organ transplant Intensive care unit (6 beds)
- Open heart surgery Intensive care unit (8 beds)
- Coronary Critical Care Unit (10 Beds)
- Newborn Critical Care Unit (24 infant)&PaediatricCare Unit (6Beds)
- Main Surgical Suite (8 Operating rooms)
- Cesarean / Delivery Suite (7 rooms)
- In-vitro Fertilization Unit
- Cardiac Lab
- Nuclear Medicine dept. (3 rooms).
- Endoscopy Suite (2 endoscopy rooms)
- Imaging Suite (10 units)
- Bone Marrow Transplantation unit (8 beds)
- Chemotherapy unit (12 Beds)
- Radiotherapy Unit
- Outpatient Clinics Department
- One-Day/Outpatient Surgery Suite



Services :

- Space program.
- Hospital planning.
- Pre-schematic
- Schematic design.
- Design development
- Final design
- Construction supervision





Name of Client:

National
Defense
Council, Egypt

Approx. cost:

114 Million EGP

Area:

24800m²

Date:

2012

Wadi El-Neel Hospital Physiotherapy / Hotel And Parking

Cairo, Egypt

Project Components:

- Rehabilitation center (44 ROOMS)
- Physiotherapy (1550 m²)
- Parking (500 Cars)



Services :

- Space program.
- Hospital planning.
- Pre-schematic
- Schematic design.
- Design development
- Final design
- Construction supervision





Name of Client:
AmounPharmac
eutica-ls

Approx. cost:
70 Million EGP

Area:

Date:
2009

El Rahmah General Hospital

AL Obour City, Egypt

Project Components:

- Nursing Units (150 beds)
- Critical Care Unit (21 Beds)
- Newborn Critical Care Unit
- Main Surgical Suite (4 Operating rooms)
- Cardiac Unit
- Cesarean / Delivery Suite (2 Rooms)
- Endoscopy Suite
- Emergency Department
- Imaging Suite (6 units)
- Laboratory Suite and Blood bank
- Physiotherapy Dept
- Outpatient Clinics Department
- One-Day/Outpatient Surgery Suite
- Administrative Facilities
- General Services



Services :

- Space program.
- Hospital planning.
- Pre-schematic
- Schematic design.
- Design development
- Final design

Associated Firm:



Name of Client:

Dreamland for
Real Estate
Development

Approx. cost:

Area:

Date:

2006

University of the Mediterranean Teaching Hospital

Cairo, Egypt

Project Components:

- Nursing units.
- Surgical suite.
- One day surgery suite
- Critical Care Units.
- Laboratory Suite
- Imaging Suite
- Outpatient Clinics
- Educational facilities



Services :

- Space program
- Hospital planning.
- Pre-schematic design

**Associated
Firm:**



Name of Client:
Amoun Holding
Co.

Approx. cost:

Area:

Date:
2006

Amoun Holding Company Office Park

AL Obour City, Egypt

Project Components:

- Office spaces
- Meeting rooms
- Convention hall
- Dining hall
- Chairman's suite
- Underground parking



Services :

- Planning.
- Pre-schematic
- Schematic design.
- Design development

Associated Firm:





Name of Client:
**The American
University in
Cairo**

Approx. cost:

Area:

Date:
2006

The AUC President HouseComplex

New Cairo, Egypt

Project Components:

- Residence of the University president.
- VIP Guests houses.
- Multi-purpose reception hall.



Services :

- Planning.
- Pre-schematic
- Schematic design.
- Design development
- Final design

Associated Firm:

*Prof. Dr.
Moamen Afifi*





Name of Client:

Organization for Teaching hospitals and Institutes

Approx. cost:
50 Million EGP

Area:

Date:
2005

EL-Sahel Teaching Hospital Upgrade and Emergency Building

Cairo, Egypt

Project Components:

- Nursing Units
- Emergency Operating Theatres suite
- Electromechanical services



Services :

- Planning.
- Pre-schematic
- Schematic design.
- Design development
- Final design

Associated Firm:

The Center Development Post Graduate Studies and Research, Cairo University





Name of Client:

Dr.
Tharwat Basily
and Family

Approx. cost:

21 Million EGP

Area:

7200 m²

Date:

2003

Techno-Star Car Showroom Building and Service Center

AL Obour City, Egypt

Project Components:

- Car Showroom
- Service Center
- Commercial Center
- Administrative Building



Services :

- Planning.
- Pre-schematic
- Schematic design.
- Design development
- Final design

Associated Firm:



Name of Client:

Dr. Salah Zaki
and Partners

Approx. cost:

Area:

Date:

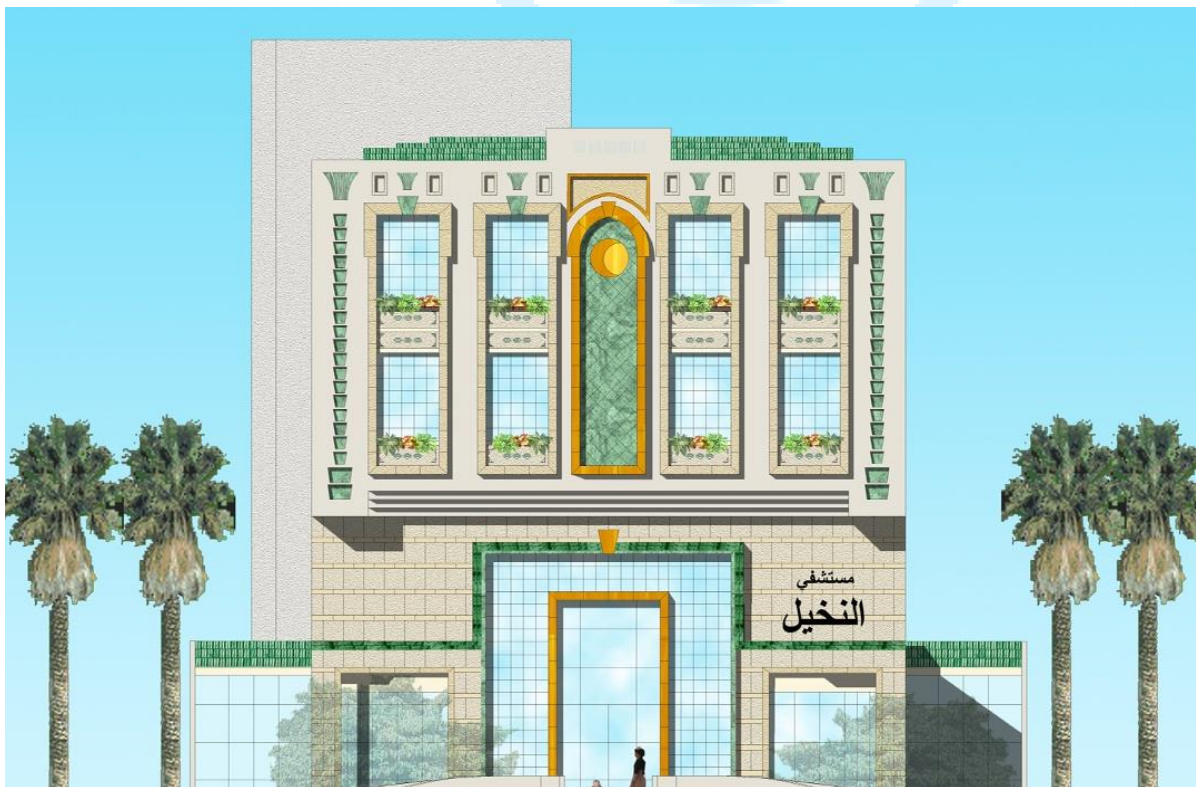
2002

El-Nakheel Specialized Hospital

Maady, Cairo, Egypt

Project Components:

- Nursing Units
- Main Surgical Suite
- Cesarean / Delivery Suite
- Imaging Suite
- Laboratory Suite and Blood bank
- Rehabilitation Dept
- Outpatient Clinics Department
- One-Day/Outpatient Surgery Suite
- Assisted Reproductive Technology Unit
- Support Services



Services :

- Space program.
- Hospital planning.
- Pre-schematic
- Schematic design.
- Design development
- Final design

Associated Firm:

Firm:





Name of Client:

Prof. Dr. Taher
Ismail and
Associates

Approx. cost:

8 Million EGP

Area:

Date:

2002

El-Kawkab El-Teby Hospital

Giza, Egypt

Project Components:

- Nursing Units
- Neonatal ICU
- Main Surgical Suite
- Special Care Unit
- Cesarean / Delivery Suite
- Tele-medicine Unit
- Emergency Department
- Imaging Suite
- Laboratory Suite
- Plastic Surgery unit
- Outpatient Clinics Department
- One-Day/Outpatient Surgery Suite



Services :

- Space program.
- Hospital planning.
- Pre-schematic
- Schematic design.
- Design development
- Final design

Associated Firm:



Name of Client:

Dreamland for Real Estate Developments

Approx. cost:

5 Million EGP

Area:

Date:

2002

Dreamland Medical Center

6th of October City, Wahat Road, Egypt

Project Components:

- Nursing Units (20 beds)
- Critical Care Unit (5 Beds)
- Main Surgical Suite (2 Operating rooms)
- Treatment Room (4 Beds)
- Resuscitation Room
- Imaging Suite
- Observation Ward. (4 Beds male)
- Observation Ward. (5 Beds female & children)



Services :

- Space program.
- Hospital planning.
- Pre-schematic
- Schematic design.
- Design development
- Final design

Associated Firm:





Name of Client:

Professor Dr.
Adel Sadek

Approx. cost:

10 Million EGP

Area:

Date:

2001

Prof. Dr. Adel Sadek Psychiatric Hospital

Cairo, Egypt

Project Components:

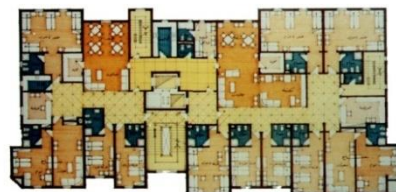
- Nursing Units (100 beds)
- Addiction Treatment department
- Therapy and Treatment Unit
- Gymnasium
- Pharmacy
- Conference Room
- Emergency Department
- Laboratory Suite
- Outpatient Clinics Department
- Roof atrium & Recreational Area
- Administrative Facilities
- General Services



Services :

- Space program.
- Hospital planning.
- Pre-schematic
- Schematic design.
- Design development
- Final design
- Construction supervision

Associated Firm:





Name of Client:
Amoun Co.

Approx. cost:
20 Million EGP

Area:

Date:
2001

El Mahaba Medical and Community Center

Cairo, Egypt

Project Components:

- Imaging Suite
- Laboratory Suite
- Renal Dialysis Dept.
- Child Nursery
- Continuing education training center
- Elderly home
- Multipurpose halls



Services :

- Space program.
- Hospital planning.
- Pre-schematic
- Schematic design.
- Design development
- Final design

Associated Firm:



Name of Client:

Organization for Teaching Hospitals and Institutes

Approx. cost:
18 Million EGP

Area:

Date:
2002

The Hearing and Speech Institute New Building

Giza.Egypt

Project Components:

- Nursing Units (20 beds)
- Main Surgical Suite (3 Operating rooms)
- Endoscopy Suite
- Emergency Department
- Imaging Suite (6 units)
- Laboratory Suite
- Outpatient Clinics Department
- Specialized audio clinics
- Specialized speech therapy unit
- Administrative Facilities
- General Services



Services :

- Space program.
- Hospital planning.
- Pre-schematic
- Schematic design.
- Design development
- Final design
- Construction supervision

Associated Firm:

Center for advancement of post graduate programs and research, Cairo University





Name of Client:

The Arabian Co.
for Real Estate
Investments

Approx. cost:

35 Million EGP

Area:

Date:

1999

Hotel Sheraton Montazah Extension, and Residential Complex

Alexandria, Egypt

Project Components:

- 4 Multi-purpose halls
- Specialty restaurants
- Shopping arcade
- Swimming pool / facilities
- Health club
- Roof gardens and Terrace Cafeterias
- Sea view terraces and cafeterias
- Super luxury residential complex
- 42 apartments, 6 Villas



Services :

- Winning First Prize in the Design Competition in 1997
- Planning
- Pre-schematic design.
- Schematic design.
- Design development
- Final design

Associated Firm:



Name of Client:
Cairo University

Approx. cost:
70 Million EGP

Area:

Date:
1997

National Cancer Institute Additions and Renovations

Cairo, Egypt

Project Components:

- New Inpatient Nursing Units building
- Outpatient department
- New Operating Theatres Suite
- Intensive Care Unit
- New Bone Marrow Transplant Dept.
- Renovations of the Old Operating Theatre suite (four rooms)
- New Animal Research Dept.
- New Conference Hall (250 persons)
- New Medical Library
- Renovations and Additions to the Administrative Building
- New Underground Garage (100 cars)
- Cobalt and Linear Accelerator Radio therapy unit.
- Gamma Camera Department
- Research Labs.
- Renovation of Radiotherapy Dept..and New CT Scan Unit



Services :

- Planning.
- Pre-schematic
- Schematic design.
- Design development
- Final design
- Construction supervision

Associated Firm:





Name of Client:
Cairo University

Approx. cost:
17 Million EGP

Area:

Date:
1997

Obstetrics and Gynecology Teaching Hospital

Cairo, Egypt

Project Components:

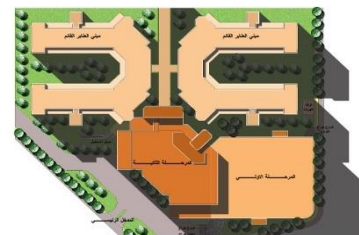
- Critical Care Unit
- Neonatal ICU
- In-vitro Fertilization Unit
- Main Surgical Suite
- Laboratory Suite
- Medical Library
- Medical Museum
- Teaching Facilities
- Multi-story Garage



Services :

- Space program.
- Hospital planning.
- Pre-schematic
- Schematic design.
- Design development
- Final design
- Construction supervision

Associated Firm:





Name of Client:
Cairo University

Approx. cost:
8 Million EGP

Area:

Date:
1997

Psychiatric and Addiction Treatment Teaching Hospital

Cairo, Egypt

Project Components:

- Inpatient Units
- Outpatient Clinics
- Therapy Units
- Gymnasium
- Teaching Facilities



Services :

- Space program.
- Hospital planning.
- Pre-schematic
- Schematic design.
- Design development
- Final design
- Construction supervision

Associated Firm:



Name of Client:

El-Sahab
Cooperative for
Egypt air Pilots

Approx. cost:

50 Million EGP

Area:

Date:

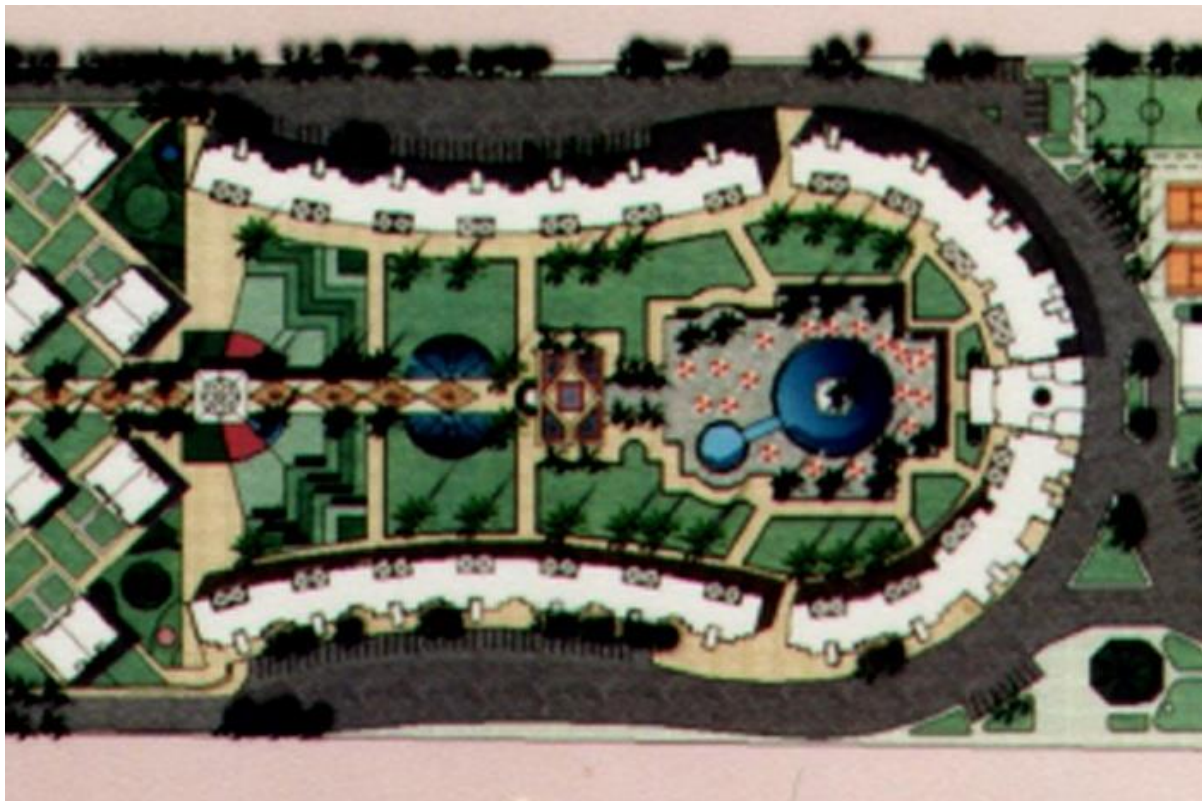
1997

EL- Sahab Tourist Village

North Coast, Egypt

Project Components:

- Private Villas
- A condominium
- Chalets
- Sport facilities
- Recreation facilities
- Swimming pools
- Indoor swimming pool
- Restaurants and cafeterias
- Shopping center
- Mosque
- Administration
- General services



Services :

- Planning.
- Pre-schematic
- Schematic design.
- Design development
- Final design

Associated Firm:





Name of Client:

Al-Azhar
University,
Cairo, Egypt

Approx. cost:
200 Million EGP

Area:
56000 m2

Date:
1996

Al-Azhar University New Teaching Hospital

Cairo, Egypt

Project Components:

- Nursing Units (500-700 beds)
- Critical Care Unit (27 Beds)
- Neo-Natal Intensive care unit
- Main Surgical Suite (20 Operating rooms)
- Cardiac Catheter Unit (2 rooms)
- Cesarean / Delivery Suite (4 Rooms)
- In-vitro Fertilization Unit
- Endoscopy Suite
- Emergency Department (4 rooms)
- Imaging Suite (12 units) , Radio therapy dept. (2 rooms)
- Laboratory Suite and Blood bank
- Nuclear Medicine dept
- Renal Dialysis dept. (20 beds)
- Physiotherapy Dept
- Outpatient Clinics Department
- Organ Transplantation Unit
- Administrative Facilities, Teaching Facilities & Medical Library, Nursing School



Services :

- Space program.
- Hospital planning.
- Pre-schematic
- Schematic design.
- Design development
- Final design
- Construction supervision





Name of Client:

National
Defense council

Approx. cost:

5 Million EGP

Area:

Date:

1995

WADI EL-NEEL NILE CLUB

Cornish El - Nile, Maadi, , Cairo, Egypt

Project Components:

- Main Dining Hall
- Main social lounge
- VIP entrance
- VIP lounge
- Activities' buildings
- Children play area
- Outdoor Terraces



Services :

- Planning.
- Pre-schematic
- Schematic design.
- Design development
- Final design
- Construction supervision

Associated Firm:





Name of Client:

National
Defense council

Approx. cost:

50 Million EGP

Area:

Date:

1995

Wadi-El-Neel General Hospital 120 beds

Cairo, Egypt

Project Components:

- Nursing Units (150 beds)
- Critical Care Unit (8 Beds)
- Newborn Critical Care Unit (6 cribs)
- Main Surgical Suite (5 Operating rooms)
- Cesarean / Delivery Suite (2 Rooms)
- Endoscopy Suite
- Emergency Department
- Imaging Suite (5 units)
- Bone Marrow Transplantation unit (2 beds)
- In-vitro Fertilization Unit
- Laboratory Suite
- Physiotherapy Dept
- Outpatient Clinics Department
- Administrative Facilities
- General Services



Services :

- Space program.
- Hospital planning.
- Pre-schematic
- Schematic design.
- Design development
- Final design
- Construction supervision

Associated Firm:





Name of Client:

Ministry of Health

Approx. cost:

200 Million EGP

Area:

Date:

1995

The National Institute for Psychiatric Health

Badr City, Egypt

Project Components:

- Six psychiatric hospital (500 beds)
- Addiction centers (150 beds)
- Research center
- Nursing school
- Doctors residence
- Recreational Area
- Agricultural Area
- Mosque
- Outpatient Clinics Department
- Administrative Facilities
- General Services



Services :

- Space program.
- Hospital planning.
- Pre-schematic
- Schematic design.
- Design development
- Final design

Associated

Firm:
Space





Name of Client:

Ministry of Health

Approx. cost:

2 Million EGP

Area:

Date:

1995

Trauma and Emergency Center

Nationwide Model (44 center) planned for implementation on all highways

Project Components:

- Triage Area
- Resuscitation rooms
- Treatment rooms
- Nursing Units (13 beds)
- Critical Care Unit
- Main Surgical Suite
- Imaging Suite
- Outpatient Clinics Department
- General Services



Services :

- Space program.
- Hospital planning.
- Pre-schematic
- Schematic design.
- Design development
- Final design

Associated Firm:



Name of Client:

Ministry of
Housing and
Reconstruction

Approx. cost:

50 Million EGP

Area:

Date:

1992

Tourist Rehabilitation Resort Village

Six of October, Egypt

Project Components:

- 210 Acres
- Hospital (216 beds)
- Elderly home (240 beds)
- Physiotherapy center
- Recreational Center
- Play grounds



Services :

- Winning the First Prize in Design Competition Held in 1992

Associated

Firm:





Permitting Special Consultant Engineering Office

Where as the Decree of the Minister of Irrigation No. 1684/1972 providing for the establishment of the Consultant Engineers Registration Book and the establishment of the Consultant engineering Offices pursuant to the approval of the Supreme Consulting Engineering Committee on 30/3/1997 and technical accreditation on 22/4/1997 of the works carried out by the Engineer, holder of the present Certificate, accoreding to articles 4 & 5 of the above mentioned Ministerial Decision and its other items, the present Certificate has been delivered to Consultant Engineer:-

Dr. Ahmed Hussien Sherif

Member of the syndicate Sub No: 3415/5 , Consultant Engineer No: 1066/2.

In the field of "Design And Execution Supervision of Public & Health And Residential Buildings" and edited to "Design Of Housing Projects And Public Buildings & Design In Specialization Of Hospitals And Tourist Establishments", session 24/2/2016.

He has renewed the consultant engineering office in the field of:

(Design Of Housing Projects And Public Buildings & Design In Specialization Of Hospitals And Tourist Establishments)

Under Number (430)

The name of : "**Shafie - Sherif Architects**"

For a period of five years starting from 24/2/2016.

(This certificate is valid for one year)

Cairo, in: 23/1/2019.

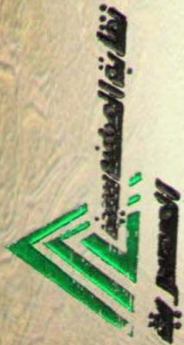
The Syndicate Representative

أ. م. هجزي

Eng./ Mahmoud Hegazy



Handwritten signature in blue ink.



CERTIFICATE OF A CONSULTANT ENGINEER

Whereas, The Decree of the Minister of Irrigation No. 1684/72 providing for the establishment of the Consultant Engineers Register and the establishment of the Consultant Engineering Offices pursuant to the approval of the Supreme Technical committee in its sitting held on 30/9/1997 of the works carried out by the engineer, holder of the present Certificate, according to articles 2 & 3 of the above mentioned Ministerial Decision and its other items. The present certificate has been delivered to Engineer : Dr.AhmedHussien Sherif syndicate No : 3415/5 Engineering Branch : **ARCHITECTURE** in his capacity as Consultant Engineer in field of : **HOUSING & PUBLIC BUILDINGS PROJECTS DESIGN , DESIGN & SUPERVISION OF PUBLIC BUILDINGS OF HOSPITALS & TOURIST ESTABLISHMENTS .**

Cairo ; 10/8/2009



Engineering Syndicate

Consultant Eng,
Elsayed M.A.Baraka

1066/2

